



SPECIFICATIONS

DGW300M/EASIA

CONTENTS

CHAPTER 1: GENERAL.....1

- 1. Standards**
- 2. Design Conditions**
- 3. Test and Check**
- 4. Painting**
- 5. Structure**

CHAPTER 2: SPECIFICATIONS.....2

CHAPTER 3: EQUIPMENT AND FEATURE.....3

- 1. Equipment**
 - (1) Generator**
 - (2) Welder**
 - (3) Others**
- 2. Feature**
 - (1) Feature**
 - (2) Protection Device.....4**
 - (3) Accessories**

CHAPTER 4: APPEARANCE.....5

CHAPTER 1: GENERAL

1. Standards

Design and production are in conformity with:

- (1) Japan Industrial Standards: JIS C 9300-1
- (2) Low Noise Type Construction Machinery Standard by Ministry of Construction
- (3) Construction Machinery Gas Emission Regulation Standard by Ministry of Construction
- (4) US Emission Protection Agency (EPA)

2. Design Conditions

- (1) Installation Place: Outside
- (2) Ambient Temperature: -15 to +40°C
- (3) Humidity: Less than 80%
- (4) Altitude: Less than 300 meters above sea level

3. Test and Check

Test shall be done with a complete workable unit of the diesel engine unit.

- (1) Check Items
 - a) Insulation and Dielectric Test
 - b) Starting
 - c) Protection Device Working Test
 - d) Voltage Deviation and Speed Variation: 0-4/4 Load
 - e) Load Test: Welding and Generating 4/4 Load

4. Painting

Painting and color specifications are as per manufacturer's standard.

5. Structure

- (1) Vibration Proof Device
Alternator is directly coupled with engine and both are installed on the bed through the vibration proof device.
- (2) Low Noise
Low noise structure is put in the inside of the bonnet.
Sound Level: 58dB(A) @7m distance
- (3) Fuel Tank
A steel fuel tank is equipped and incorporated with the electrical level gauge.

CHAPTER 2: SPECIFICATIONS

Model			DGW300M／EASIA
Generating Method			Rotating Field
Welding DC Generator	Rated Current (A)		260／280
	Rated Voltage (V)		30.4／31.2
	Duty Cycle (%)		50
	Rated Speed (min ⁻¹)		3000／3600
	No Load Voltage (V)		MAX 85
	ECO	Current Adj. Range (A)	30～280／30～300
		Welding Rod (mm)	2.0～6.0
	AUTO／HIGH	Current Adj. Range (A)	35～280／40～300
Welding Rod (mm)		2.0～6.0	
AC Generator	Rated Frequency (Hz)		50／60
	Rated Speed (min ⁻¹)		3000／3600
	Phase		1-Phase
	Rated Voltage (V)		200／220
	Rated Current (A)		15A×2
	Power Factor		1.0
	Rated Output (kVA)		6.0／6.6
	Rating		Continuous
Engine	Model		Kubota Z602
	Type		Water-Cooled 4-Cycle Diesel Engine
	Displacement (L)		0.599
	Rated Output (kW/min ⁻¹)		12.5／3600(Gross Intermittent)
	Fuel		ASTM No.2 Diesel Fuel or Equivalent
	Lubricant Oil		API Class CD or Higher
	Lubrication Oil Volume (L)		2.5 (Effective 0.8)
	Cooling Water Volume (L)		3.0 (Sub Tank Capacity 0.6 L included)
	Starting Method		Starter Motor
Battery			44B19L(Japan Industrial Standard)
Fuel Tank Capacity (L)			25
Dimension	Length (mm)	1200	
	Width (mm)	566	
	Height (mm)	768	
Dry Weight (kg)			270
Full Weight (kg)			299

*Specifications subject to change without notice.

CHAPTER 3: EQUIPMENT AND FEATURE

1. Equipment

(1) Generator

Digital Display	1 piece
• AC Voltage	
• DC Current	
• Operating Hour (Accumulated)	
Breaker	2 pieces
With Leakage Shut off Device: 30mA 0.1 second	
1-Phase 220V Receptacle	2 sets
Voltage Adjustment Volume	1 piece

(2) Welder

Output Control Dial	1 piece
Output Selector Switch	1 piece
Welding Current Output Terminal	1 set

(3) Others

Idle Control Switch	1 piece
Starter Switch	1 piece
Monitor Lamp	1 set
• Water Temperature	
• Battery Charge	
• Oil Pressure	
• Pre Heat	

2. Feature

(1) Feature

• 3 Way Switch	DC Current, AC Voltage or Operating Hour
• Preset Performance	DC Current and AC Voltage Control System
• Sound Level	58dB(A) at Eco mode
• Generating Performance	2 x 15A Single Phase Outlets-Earth Leakage Protected
• 3 Way Drive Control	High/Auto/Eco
• VRD*	Standard
• Remote Control	Optional
• Environmental	Tier 4 Engine, Complies with EPA 3
• Fuel Tank Capacity	25 Liters
• Dry Weight	270kg
• Dimensions (LxWxH)	1200 x 566 x 768 mm

*VRD (Voltage Reduction Device): Device to reduce the output voltage when welding paused.

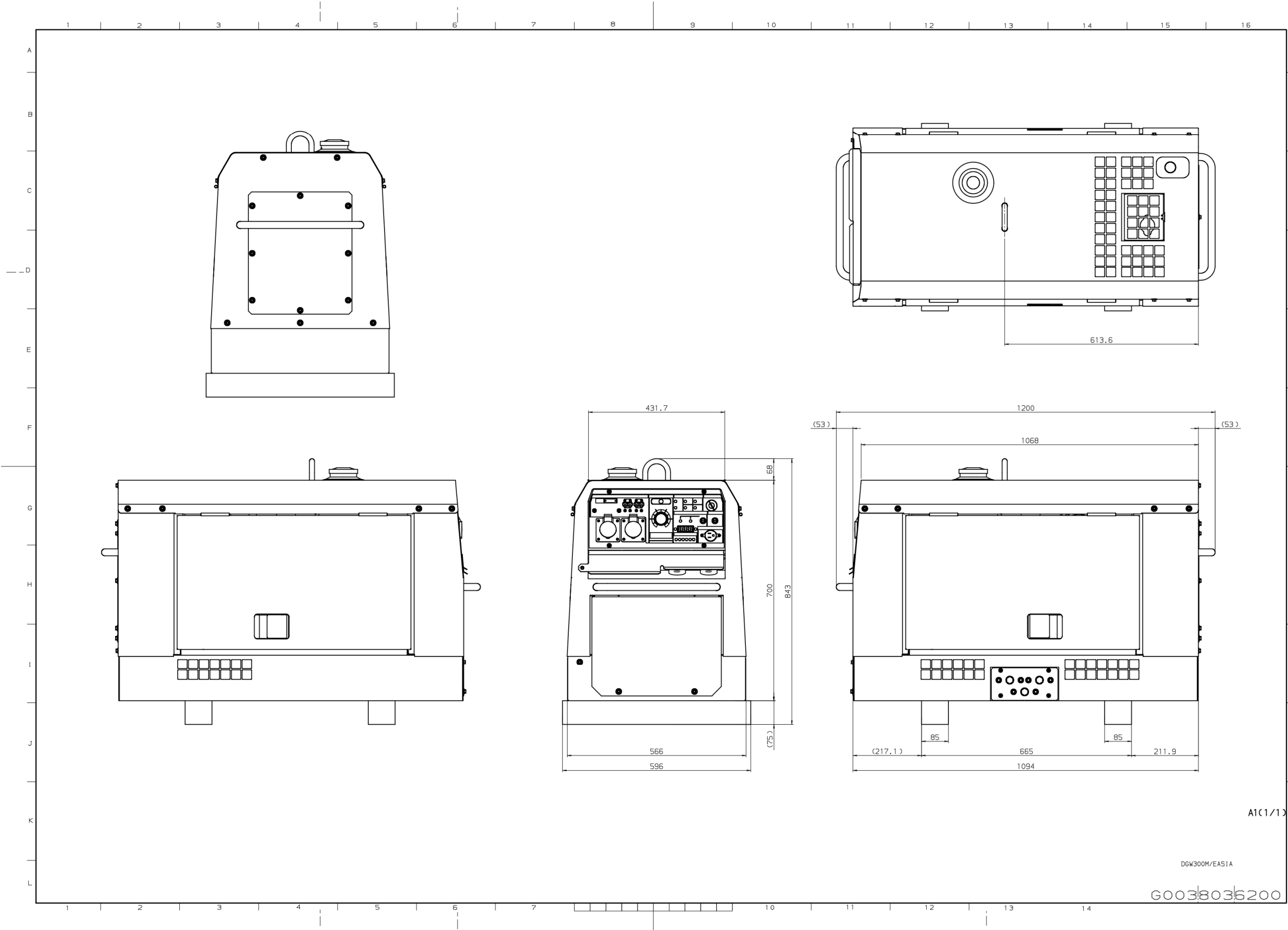
(2) Protection Device

Item	Standard	Monitor Lamp	Trip	Engine Shut-Down
Low Oil Pressure	98kPa	○	-	○
High Water Temperature	110°C	○	-	○
Insufficient Charging	-	○	-	○
Over Current	15A	○	○	-
Current Leakage	30mA 0.1sec.	○	○	-
VRD	Std			

(3) Accessories

Owner's & Operator's Manual	1 copy
Emission Control Systems Limited	1 copy
Warranty (by engine manufacturer)	

CHAPTER 4: APPEARANCE



YAMABIKO CORPORATION

**35 SHIN-UJIGAMI, KITA-HIROSHIMA-CHO,
YAMAGATA-GUN, HIROSHIMA 731-1597 JAPAN**

Telephone: (81)826-72-5140

Fax: (81) 826-72-7004

www.yamabiko-corp.co.jp